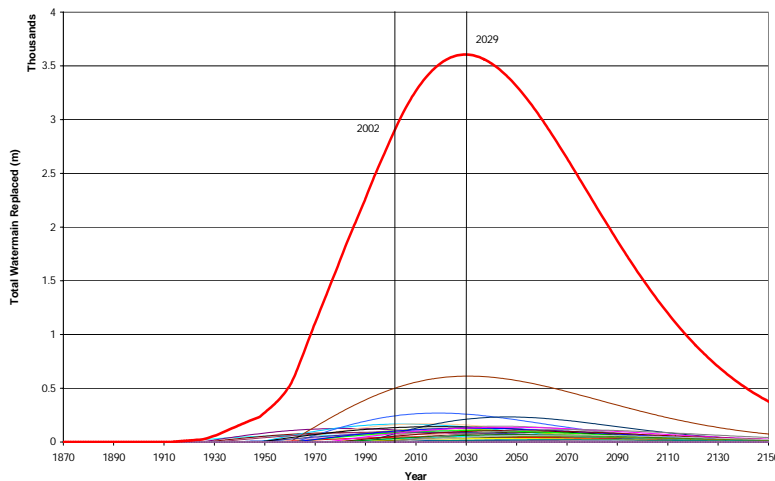


Asset Management Planning Study



Based upon the success of the GVRD Asset Management Planning Gap Analysis completed earlier by Earth Tech, which defined the gap between current GVRD asset management planning practices and asset management best practices, the GVWD retained Earth Tech to develop draft policies or commitment options that could be incorporated into the Region's Drinking Water Management Plan (DWMP) so that specific asset management targets and levels of service will continue to be met without future financial hardship. The study had to address both transmission and distribution systems, and water storage and treatment facilities to produce material relevant to both the GVWD and its 20 member municipalities.

Asset management planning program options that ranged from simple to sophisticated were analyzed along with GVRD's specific asset management requirements in order to determine the most appropriate asset management strategies. As in the earlier Gap Analysis, the "6 Whats of Asset Management" were used as a framework for this investigation. Accompanying this analysis was a range theoretical replacement modeling of GVWD infrastructure assets to determine the approximate asset replacement capital requirements timeline over the next 100 years. The output of this type of modeling is known as a "Nessie Curve". Specific management and financial strategies were developed for the GVRD to meet its objective of financial sustainability in perpetuity. Based upon the outcome of this study, and with the implementation of the recommended asset management plan, GVRD will be able to meet its utility service levels with the use of Capital Reserves, and small, gradual increases to the capital replacement budget over the next 20 years.

This study highlights the need to ingrate financial planning and strategy with engineering to derive a complete and rigorous asset management plan.

PROJECT DETAILS

CLIENT: Greater Vancouver Regional District
LOCATION: British Columbia, Canada

REFERENCE INFORMATION

NAME Stan Woods, Senior Project Engineer
TEL 604.436.6909

PROBLEM

The Greater Vancouver Water District (GVWD) wanted to identify appropriate asset management related financial policies into its Drinking Water Management Plan that will assure the utilities financial sustainability in the long run.

CHALLENGES

What are the specific asset management related issues and challenges that presently face the GVWD? What strategies should be implemented that will allow the District to respond in the most cost effective manner?

SOLUTION

Conducted a best practice scan of asset management strategies for water utilities. Investigated alternative asset management planning options and recommended an approach that best meets the local needs of the GVWD and member municipalities, including life cycle capital replacement modeling of GVWD assets.

BENEFITS

A detailed framework for the GVWD and its member municipalities to implement specific asset management strategies that will meet actual requirements, **ENSURE UTILITY COSTS CAN BE PAID FOR IN A FAIR** And equitable manner, and **ENSURE WATER UTILITY SERVICE** levels will continue to be met.